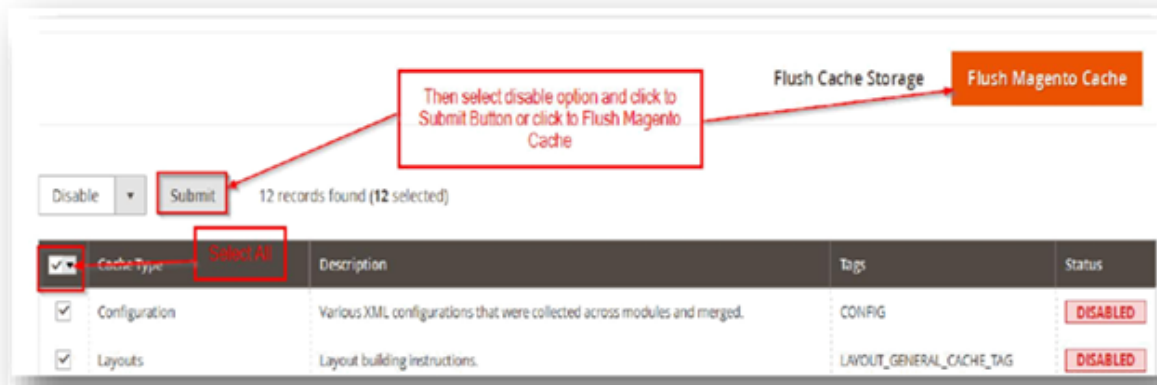
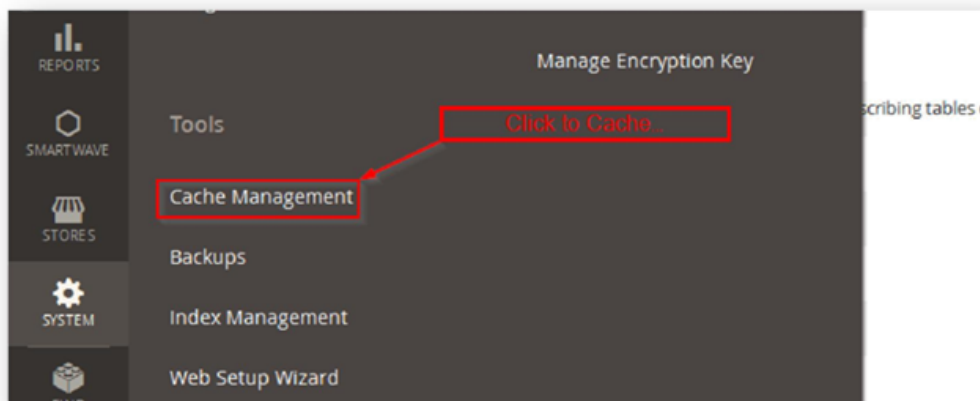


# SpeeDee for Magento 2 Installation Instructions

## Installation:

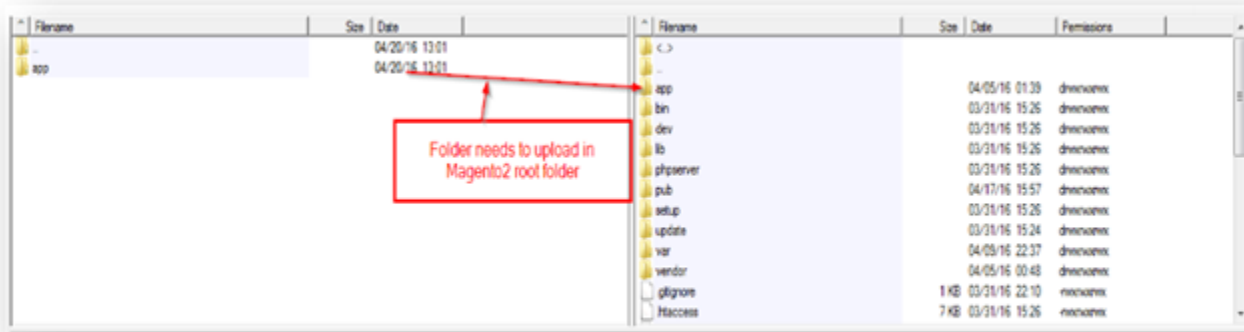
Backup your web directory and store database.

Login to the admin panel and disable the cache as shown below:



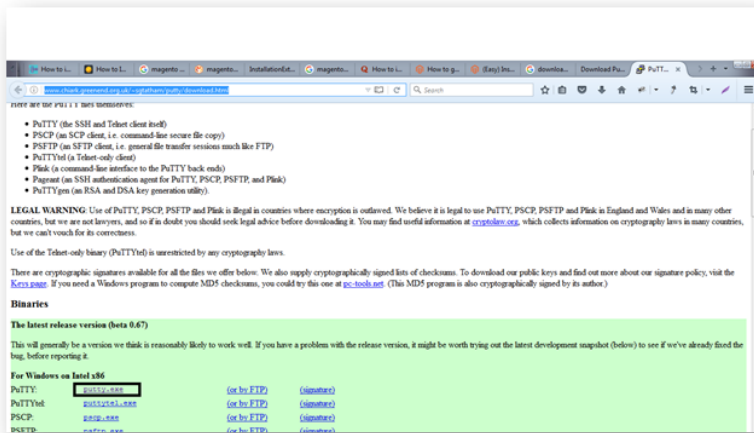
## Upload Files

Upload the app folder in Magento2 root directory:



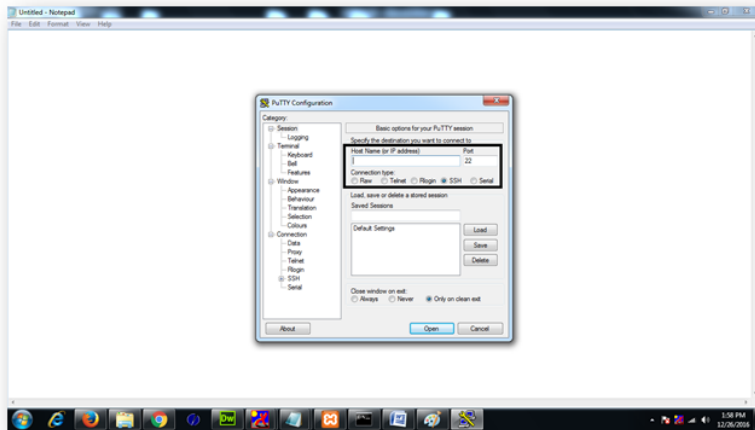
Open Putty and Follow these commands:

Please find the link here to download the putty software <http://www.chiark.greenend.org.uk/~sgtatham/putty/download.html>



Step 1

Open the putty software, and click on RUN:



## Step 2

Enter all the credential details to connect it with the server. (Your credentials must be able to run php commands.)

- Host Name (or IP address): enter your host name or IP address of your website.
- Port: Enter the port number. It is provided with the ssh details when you create SFTP.
- SSH: Select SSH radio button as shown in above screenshot.
- Press Open

## Step 3

Enter your login username and password as prompted and you'll be connected.

## Step 4

Navigate to your Magento root directory.

## Step 5

Run the command to enable the extension: `php bin/magento setup:upgrade`

## Step 6

Run command to flush the cache: `php bin/magento cache:flush`

## Step 7

Run reindex command: `php bin/magento indexer:reindex`

Once putty is completed, enter your site's admin. Go to Sales/Configuration/Sales/Shipping Settings/Shipping Methods. Speedee should appear as an option.

## Troubleshooting

**After the extension installation the store gives an error, or blank page, or suggests starting Magento installation procedure.**

**Run permissions command. Change permissions on two folders: PUB and VAR to 777. Make sure the folders are recursive. (All permissions will change for all files/folders as well)**

## **Additional Questions or Issues**

**If you have any additional questions, issues, or need help with your new extension please contact us at [help.web2market.com](https://help.web2market.com).**

**Thank you.**