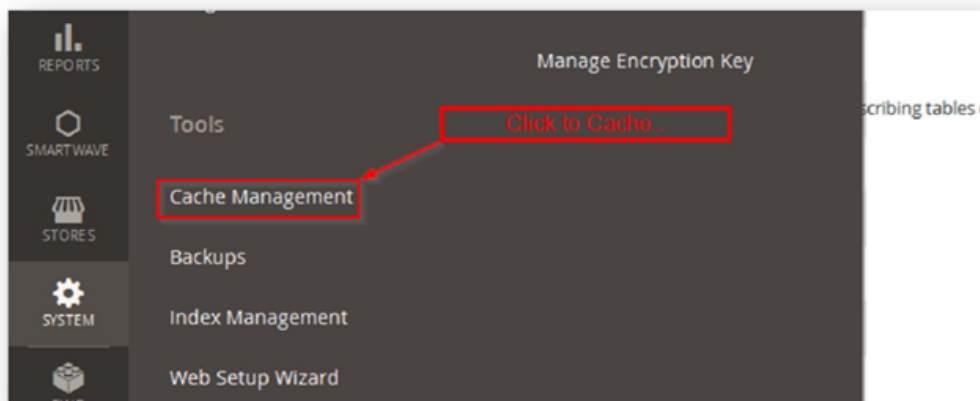


SpeeDee for Magento 2 Installation Instructions

Installation:

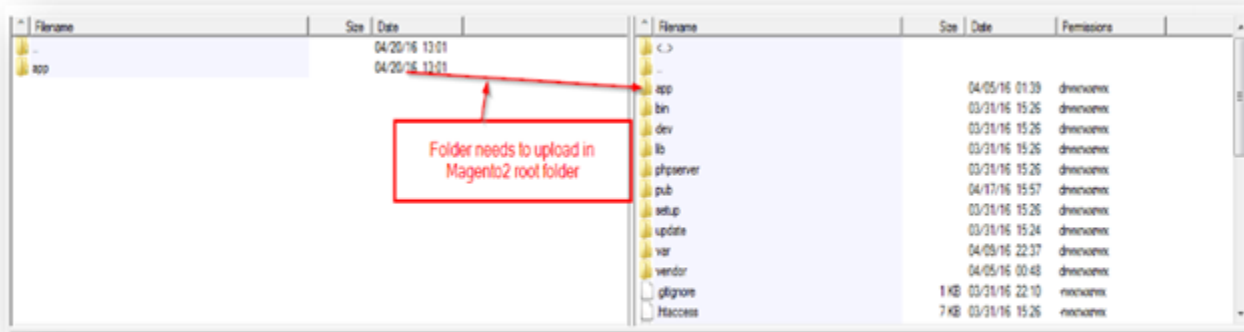
Backup your web directory and store database.

Login to the admin panel and disable the cache as shown below:



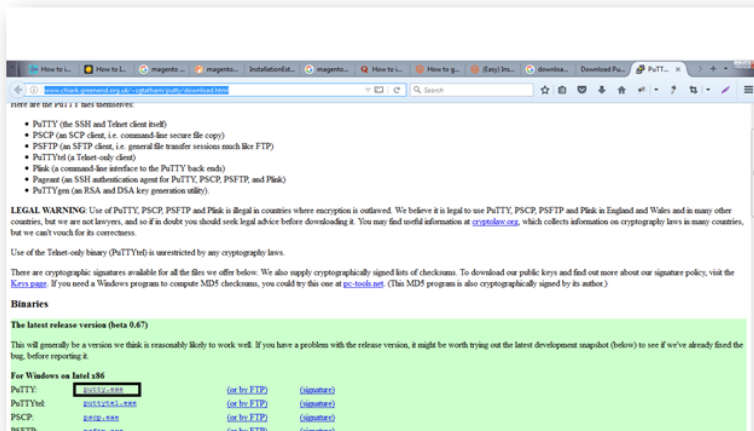
Upload Files

Upload the app folder in Magento2 root directory:



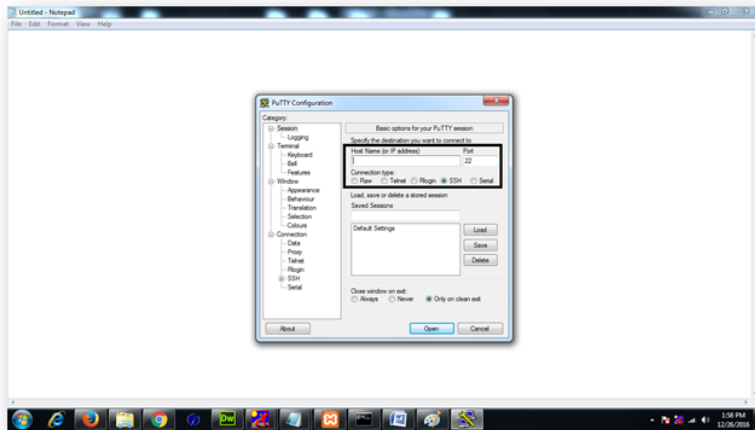
Open Putty and Follow these commands:

Please find the link here to download the putty software <http://www.chiark.greenend.org.uk/~sgtatham/putty/download.html>



Step 1

Open the putty software, and click on RUN:



Step 2

Enter all the credential details to connect it with the server. (Your credentials must be able to run php commands.)

- Host Name (or IP address): enter your host name or IP address of your website.
- Port: Enter the port number. It is provided with the ssh details when you create SFTP.
- SSH: Select SSH radio button as shown in above screenshot.
- Press Open

Step 3

Enter your login username and password as prompted and you'll be connected.

Step 4

Navigate to your Magento root directory.

Step 5

Run the command to enable the extension: `php bin/magento setup:upgrade`

Step 6

Run command to flush the cache: `php bin/magento cache:flush`

Step 7

Run reindex command: `php bin/magento indexer:reindex`

Once putty is completed, enter your site's admin. Go to Sales/Configuration/Sales/Shipping Settings/Shipping Methods. Speedee should appear as an option.

Troubleshooting

After the extension installation the store gives an error, or blank page, or suggests starting Magento installation procedure.

Run permissions command. Change permissions on two folders: PUB and VAR to 777. Make sure the folders are recursive. (All permissions will change for all files/folders as well)

Additional Questions or Issues

If you have any additional questions, issues, or need help with your new extension please contact us at help.web2market.com.

Thank you.